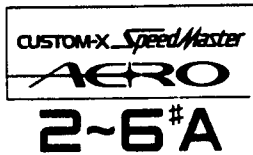


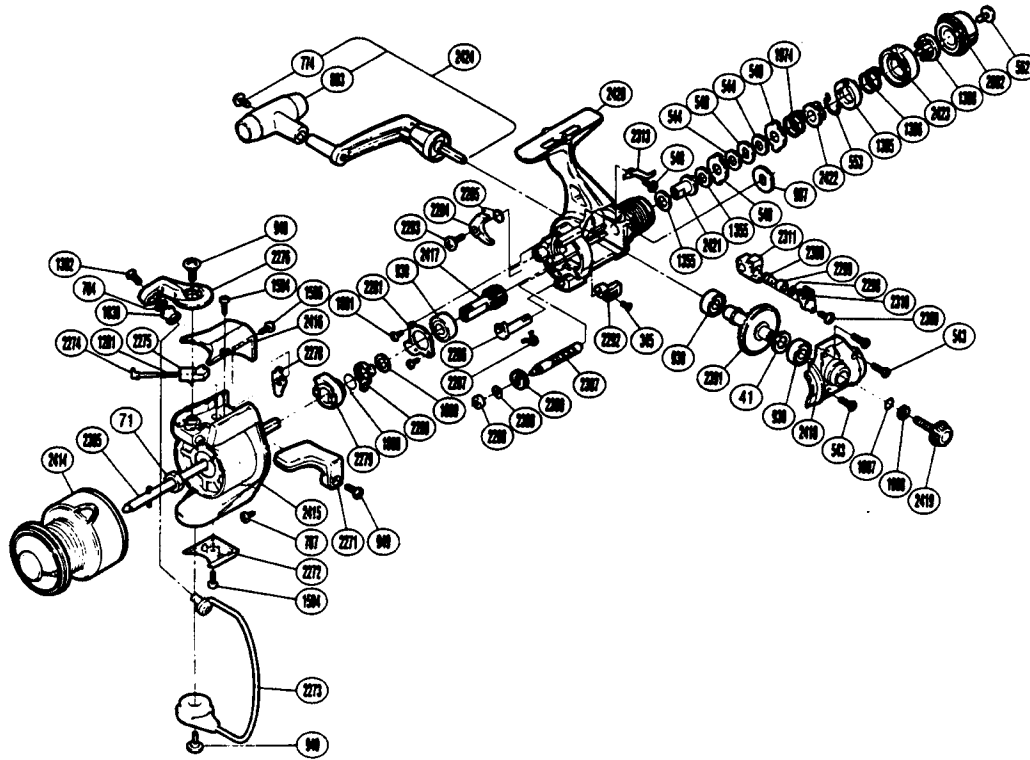
EXPLODED PARTS VIEW



SHIMANO®

1990 REPAIR MANUAL

Shimano American Corporation, One Shimano Dr.
Irvine, CA 92718



TO ORDER: USE RD PREFIX
WITH PART NUMBER

PARTS LIST

RD #	DESCRIPTION	RD #	DESCRIPTION	RD #	DESCRIPTION
0041	Drive Gear Washer	1308	Pre-Set Cam	2292	Anti-Reverse Lever
0071	Rotor Nut	1355	Drag Washer "C1"	2298	Spacer
0345	Anti-Reverse Lever Screw	1504	Bail Hold Cover Screw	2299	Oscillating Slider Bushing
0540	Anti-Reverse Pawl Screw	1506	Bail Spring Cover Screw	2300	Oscillating Pawl
0543	Side Cover Screw (B)	1888	Anti-Reverse Lock Out Spring	2305	Main Shaft
0544	Drag Washer "C2" (White)	1890	Bushing Washer	2307	Worm Shaft
0548	Key Washer "A"	1891	Multi Purpose Screw	2309	Slider Retainer Screw
0549	Eared Washer "B"	1974	Drag Coil Spring	2310	Oscillating Slider Retainer
0553	Hold Click Spring	2002	Drag Knob	2311	Oscillating Slider
0562	Drag Programmer Screw	2271	Quick-Fire II Trigger	2313	Drag Click
0774	Handle Knob Screw	2272	Rotor Side Cover	2389	Worm Shaft Spacer
0784	Line Roller Washer	2273	Bail Assembly	2390	Idle Gear
0787	Nut Lock Screw	2274	Bail Spring Guide (A)	2391	Drive Gear
0803	Handle Knob	2275	Bail Spring Guide (B)	2414	Spool Assembly
0930	Ball Bearing	2276	Bail Arm	2415	Rotor
0940	Bail Trip Cam Screw	2278	Bail Trip Lever	2416	Bail Spring Cover
0949	Trigger Screw	2279	Anti-Reverse Ratchet	2417	Pinion Gear
0997	Click Gear	2280	Anti-Reverse Lock Out	2418	Side Cover
1007	Lock Washer Retainer	2281	Bearing Retainer	2419	Handle Screw Cap
1008	Handle Lock Washer	2283	Anti-Reverse Pawl Screw	2420	Body
1038	Sic Ceramic Roller	2284	Anti-Reverse Pawl	2421	Drag Shaft
1201	Bail Spring	2285	Anti-Reverse Pawl Spring	2422	Pressure Screw
1302	Line Roller Screw	2286	Anti-Reverse Cam	2423	Pre-Set Ring
1305	Pre-Set Spring Cover	2287	Anti-Reverse Cam Spring	2424	Handle Assembly
1306	Pre-Set Spring	2288	Worm Bearing		

Prices and specifications subject to change without notice.